

# Beta-Pinene

Chiral separation on MEGA-DEX columns

CHIRAL DEX

MEGA<sup>®</sup>  
gas chromatography solutions

## Conditions:

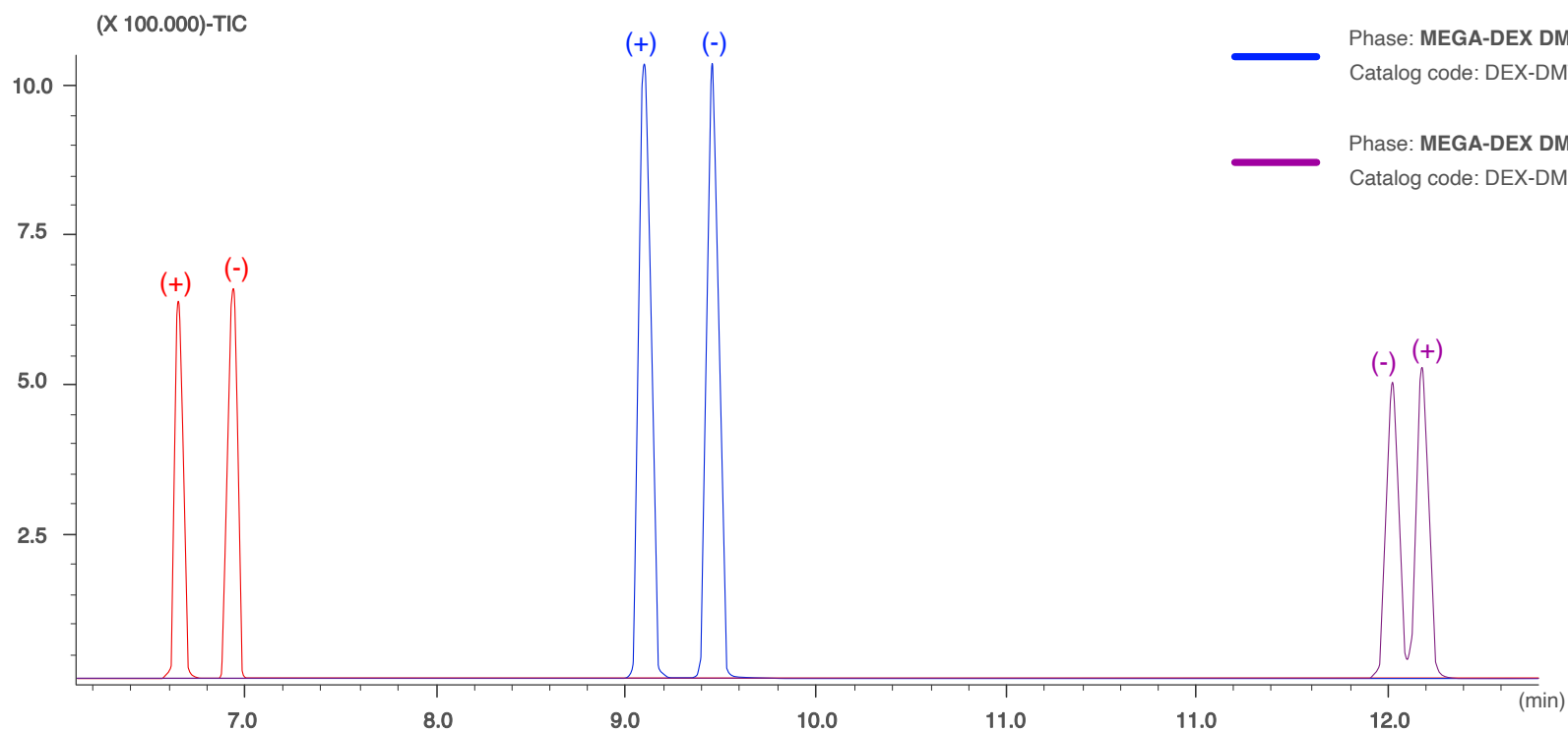
Injection: Split 250°C, 0.5  $\mu$ L, 1:50 Split Ratio.

Sample dilution: 1mg/1mL in n-Hexane.

Contact us for additional information.

## Chiral separation on MEGA-DEX Columns

Columns dimensions: 0.25mm, 0.25 $\mu$ m, 25m



Acknowledgments: Prof C. Bicchi, C. Cordero et al., Università di Torino, Dipartimento di Scienza e Tecnologia del Farmaco, Via Pietro Giuria, 9 Torino, Italy.