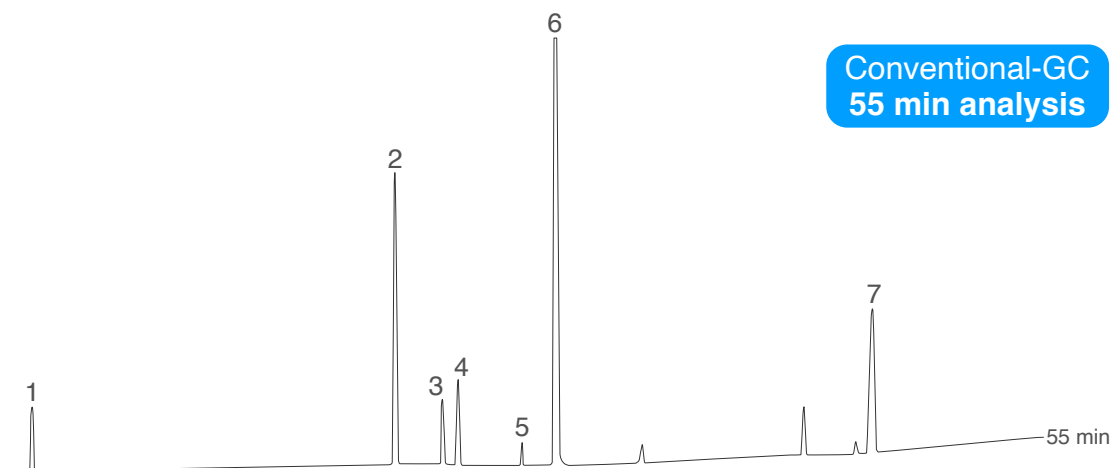


Chamomile Essential Oil - Comparison Conventional vs. FAST



Conventional-GC
55 min analysis

Column: **MEGA-1701 - 0.25mm, 0.30 μ m, 25m**
Catalog Code: S-1701-025-030-25

Conventional-GC conditions:

Injection: Split 230°C, 1 μ L, 1:50 Split Ratio.

Sample dilution: 1% in Cyclohexane.

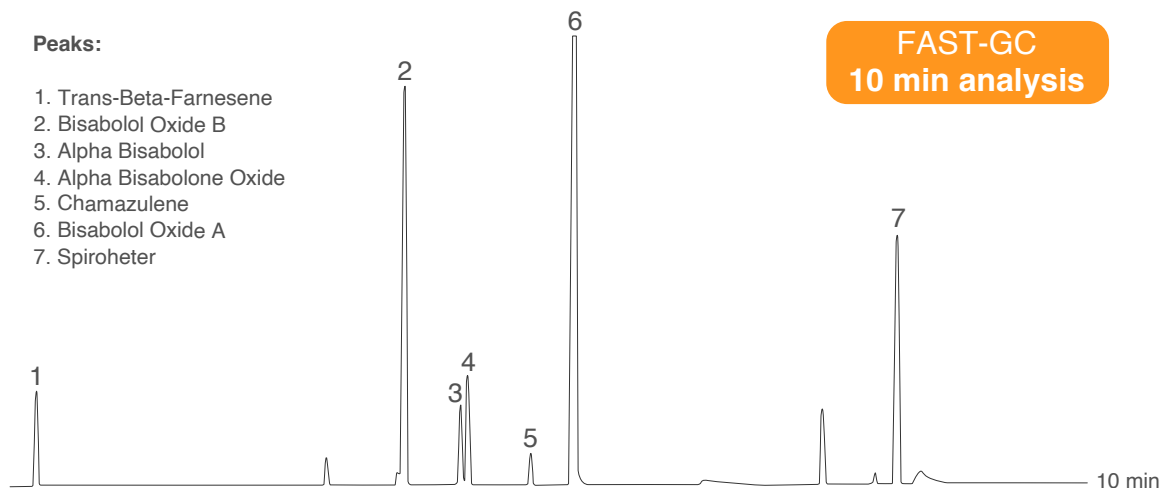
Oven Temp: 50°C (0.1min), 3°C / min, 250°C (5min).

Detector: FID, 250°C.

Carrier Gas: Hydrogen, 1.5 mL/min.

Peaks:

1. Trans-Beta-Farnesene
2. Bisabolol Oxide B
3. Alpha Bisabolol
4. Alpha Bisabolone Oxide
5. Chamazulene
6. Bisabolol Oxide A
7. Spiroheter



FAST-GC
10 min analysis

Column: **MEGA-1701 FAST - 0.10mm, 0.10 μ m, 5m**
Catalog Code: F-1701-010-010-5

FAST-GC conditions:

Injection: Split 230°C, 1 μ L, 1:50 Split Ratio.

Sample dilution: 1% in Cyclohexane.

Oven Temp: 50°C (0.1min), 3°C/min, 250°C(5min).

Detector: FID, 250°C.

Carrier Gas: Hydrogen, 1.5 mL/min.

Acknowledgement: Prof C. Bicchi, C. Brunelli et al. - Università di Torino, Dipartimento di Scienza e Tecnologia del Farmaco, Via Pietro Giuria, 9 - Torino - Italy.