

# Cineol (+/-)

Chiral separation on MEGA-DEX columns

CHIRAL DEX

MEGA<sup>®</sup>  
gas chromatography solutions

### Conditions:

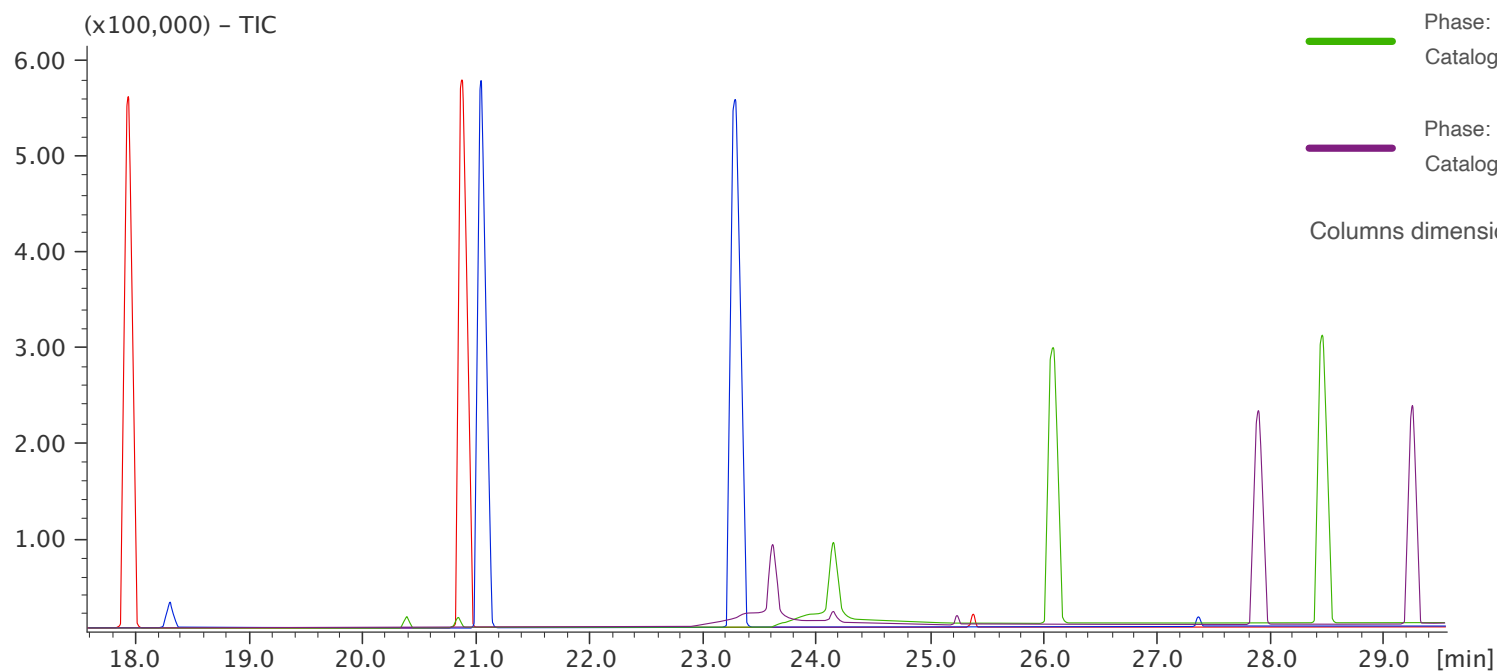
Injection: Split 250°C, 0.5  $\mu$ L, 1:50 Split Ratio.

Sample dilution: 1mg/1mL in n-Hexane.

Contact us for additional information.

- Phase: **MEGA-DEX DET Beta**  
Catalog code: DEX-DET-B-025-025-25
- Phase: **MEGA-DEX DMT Beta**  
Catalog code: DEX-DMT-B-025-025-25
- Phase: **MEGA-DEX DAC Beta**  
Catalog code: DEX-DAC-B-025-025-25
- Phase: **MEGA-DEX DMP Beta**  
Catalog code: DEX-DMP-B-025-025-25

Columns dimensions: 0.25mm, 0.25  $\mu$ m, 25m.



Acknowledgement: Prof C. Bicchi, C. Cordero et al. - Università di Torino, Dipartimento di Scienza e Tecnologia del Farmaco, Via Pietro Giuria, 9 - Torino - Italy.