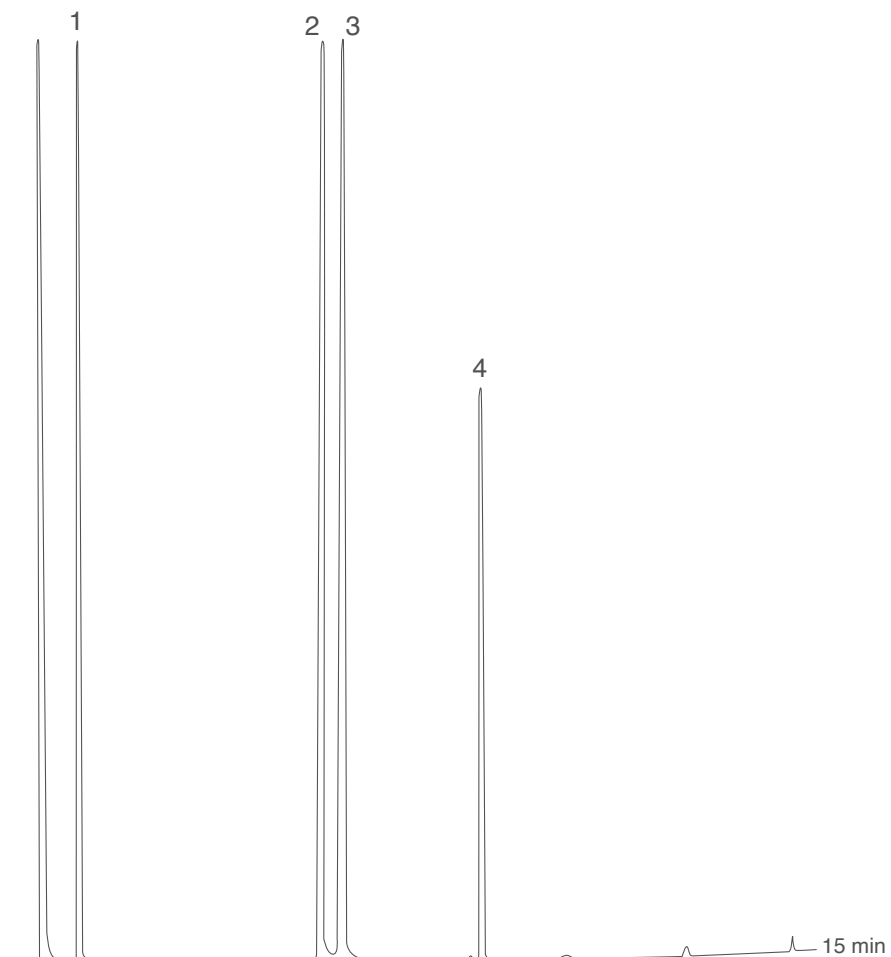


Amines

CUSTOM
DEDICATED

MEGA®
gas chromatography solutions



Column: **MEGA-PS264 - 0.32mm, 5.00 μ m, 30m**

Catalog Code: C-PS264-032-500-30

Conditions:

Injection: Split 250°C, 1.0 μ L, 1:50 Split Ratio.

Oven Temp.: 100°C, 4°C/min, 250°C.

Detector: FID, 260°C.

Carrier Gas: Hydrogen, 70 kPa.

Peaks:

1. Monoethanolamine
2. Diethanolamine
3. Ethylethanolamine
4. Buthyl carbitol