

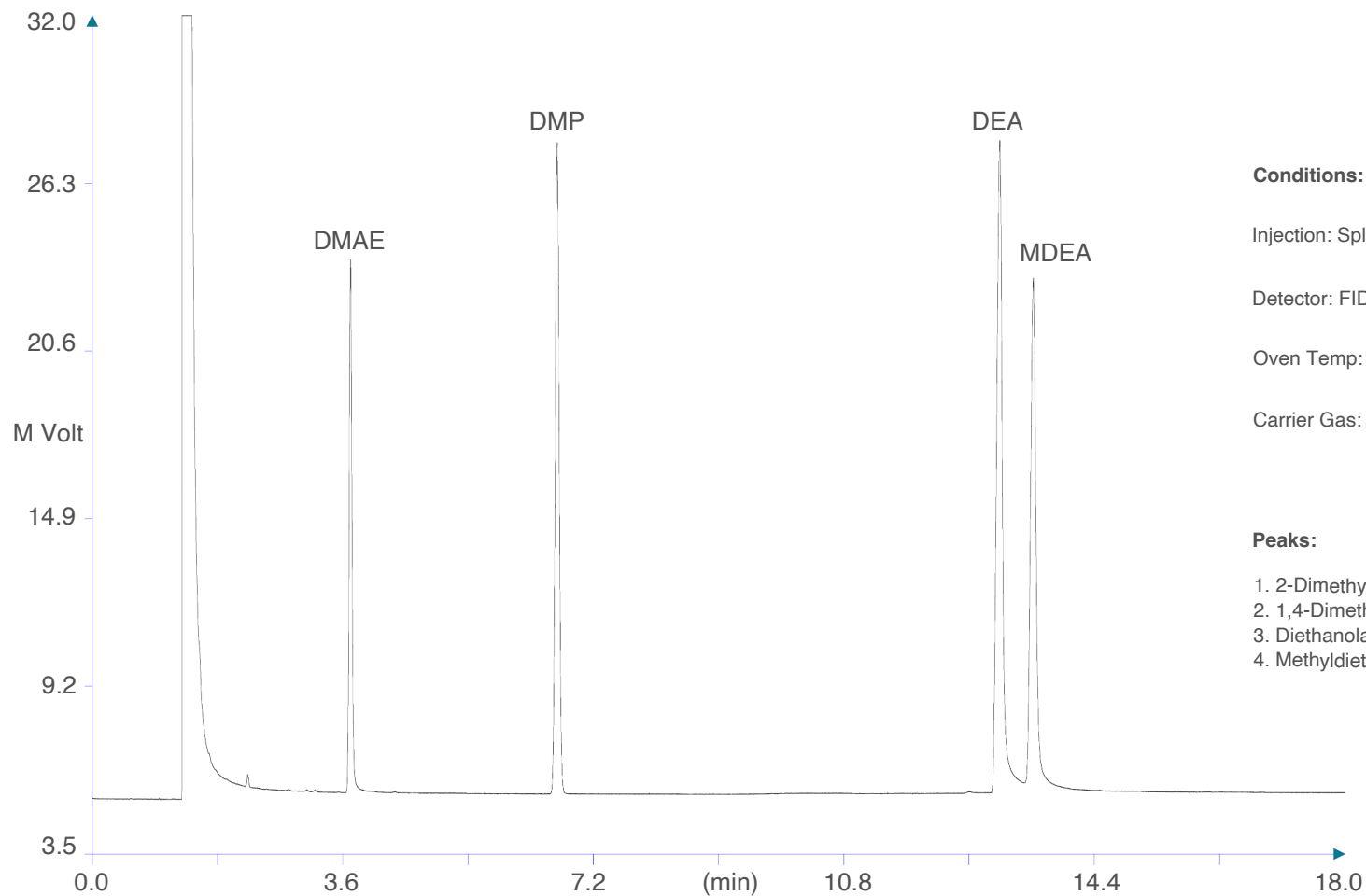
Amines - Basic Compounds

CUSTOM
DEDICATED

MEGA[®]
gas chromatography solutions

Column: **MEGA-PS255 - 0.25mm, 3.00 μ m, 30m**

Catalog Code: C-PS255-025-300-30



Conditions:

Injection: Split, 250°C.

Detector: FID, 300°C.

Oven Temp: 100°C, 2.5°C/min, 200°C.

Carrier Gas: Hydrogen, 80kPa.

Peaks:

1. 2-Dimethylamino Ethanol
2. 1,4-Dimethyl Piperazine
3. Diethanolamine
4. Methyldiethanolamine