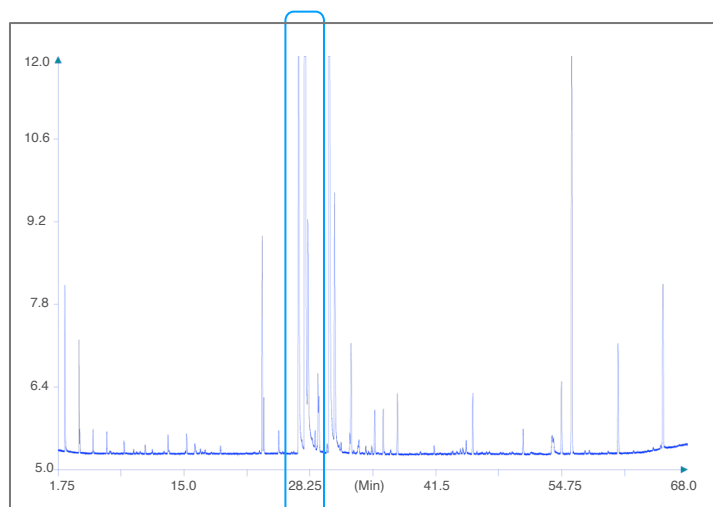


Beta-Citronellol in a real perfume sample

CHIRAL DEX

MEGA[®]
gas chromatography solutions

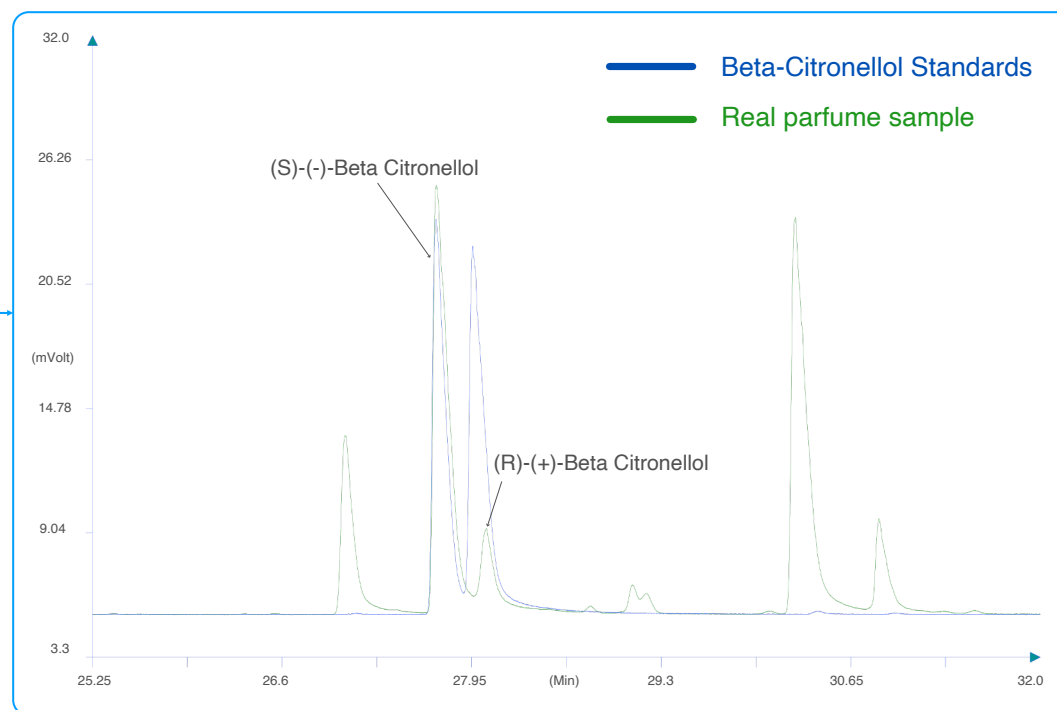
Chiral separation on MEGA-DEX columns



Real perfume sample
Diluted 1:100 in n-Hexane

Column: **MEGA-DEX DAC Beta-** 0.25mm, 0.25 μ m, 25m

Catalog Code: DEX-DAC-B-025-025-25



Conditions:

Injection: Split 250°C, 100mL/min Split flow,
0.5 μ L injection volume.

Oven Program: 50°C, 2°C/min.

Carrier Gas: Hydrogen, 80 kPa.

Contact us for additional information.