

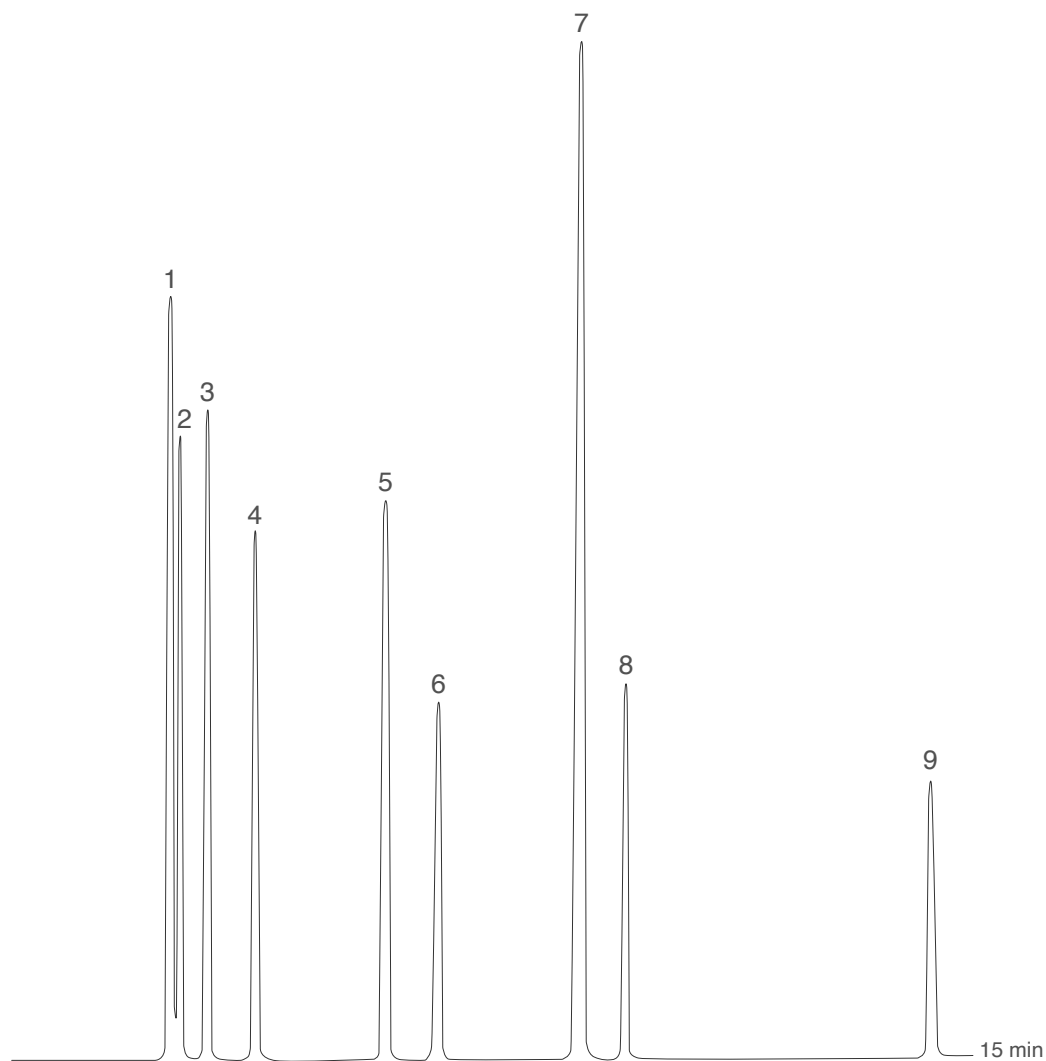
## Chlorinated Hydrocarbons (EPA method 612)

STANDARD

**MEGA**<sup>®</sup>  
gas chromatography solutions

Column: **MEGA-5 - 0.53mm, 1.50 $\mu$ m, 15m**

Catalog Code: S-5-053-150-15



### Conditions:

Injection: On-Column, 1  $\mu$ L.

Sample dilution: 20  $\mu$ g/mL each in Isooctane.

Oven Temp: 50°C, 8°C/min, 150°C.

Detector: ECD, 250°C.

Carrier Gas: Helium, 20 kPa.

### Peaks:

1. 1,3-Dichlorobenzene
2. 1,4-Dichlorobenzene
3. 1,2-Dichlorobenzene
4. Hexachloroethane
5. 1,2,4-trichlorobenzene
6. Hexachlorobutadiene
7. Hexachlorocyclopentadiene
8. 2-chloronaphthalene
9. Hexachlorobenzene