

Pinot Blanc Wine - HS-SPME GC-MS Analysis

Authors

A. Dupas de Matos, E. Longo, V. Merkyte, P.F. Tchouakeu Betnga, D. Fortuna, E. Boselli;
Free University of Bolzano, NOITeckPark Alto-Adige/Südtirol,
contact email: emanuele.boselli@unibz.it

Conditions

Oven: 40°C (0.2min), 3°C/min, 180°C,
10°C/min, 230°C (15min).

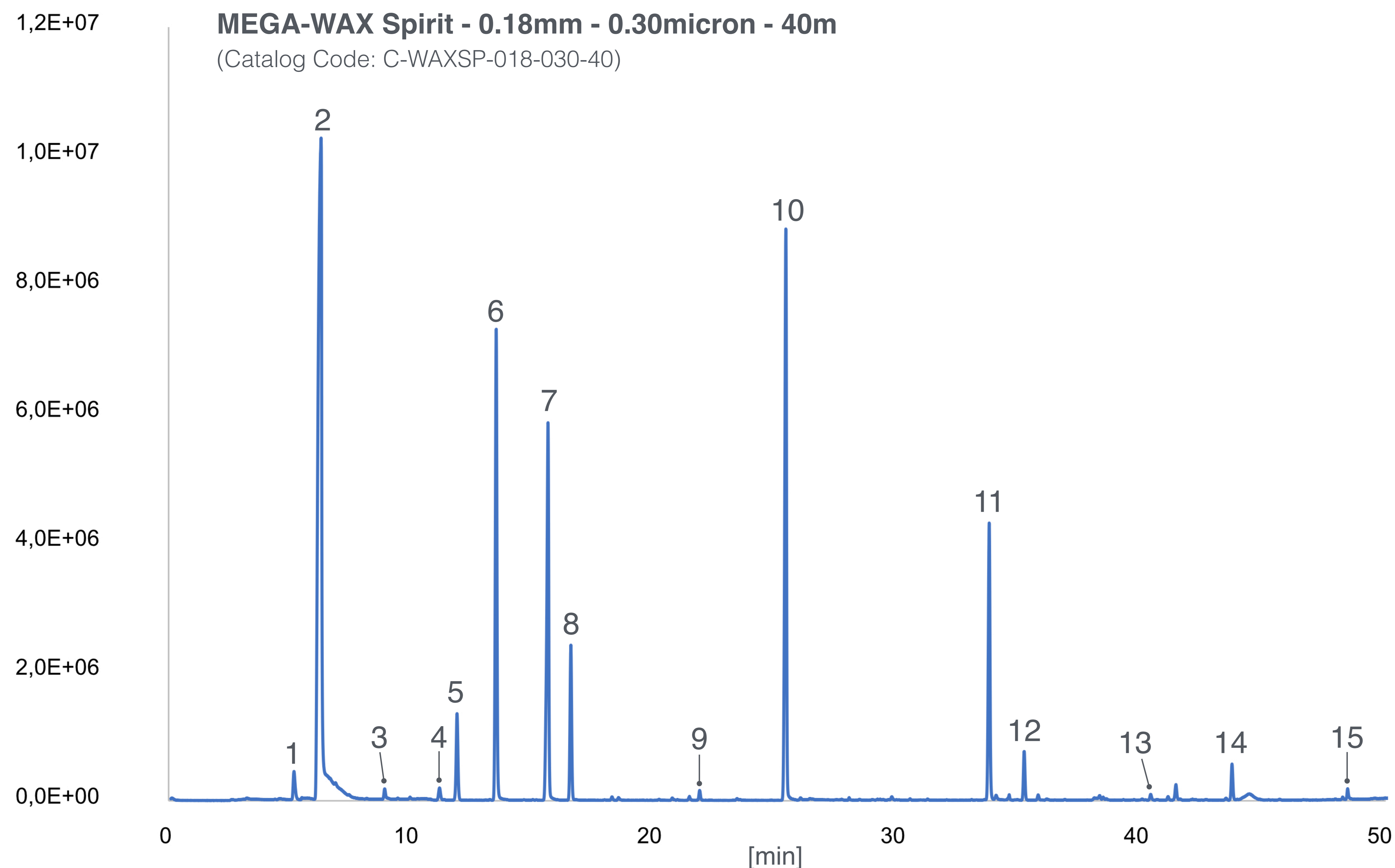
Carrier: 0.7mL/min, Helium.

Injector: Split (1:10 ratio) 6min, 240°C.

Detector: MSD (m/z 34-360).

Column**MEGA-WAX Spirit - 0.18mm - 0.30micron - 40m**

(Catalog Code: C-WAXSP-018-030-40)

**Peaks**

1. Ethyl acetate
2. Ethanol
3. Ethyl butanoate
4. 2-methyl-1-propanol (isobutyl alcohol)
5. 3-methylbutyl acetate
6. 2-methyl-3-pentanol (Internal Standard)
7. 3-methyl-1-butanol (isoamyl alcohol)
8. Ethyl hexanoate
9. 1-hexanol
10. Ethyl octanoate
11. Ethyl decanoate
12. Diethyl succinate
13. Ethyl dodecanoate
14. Phenylethyl alcohol
15. Octanoic acid



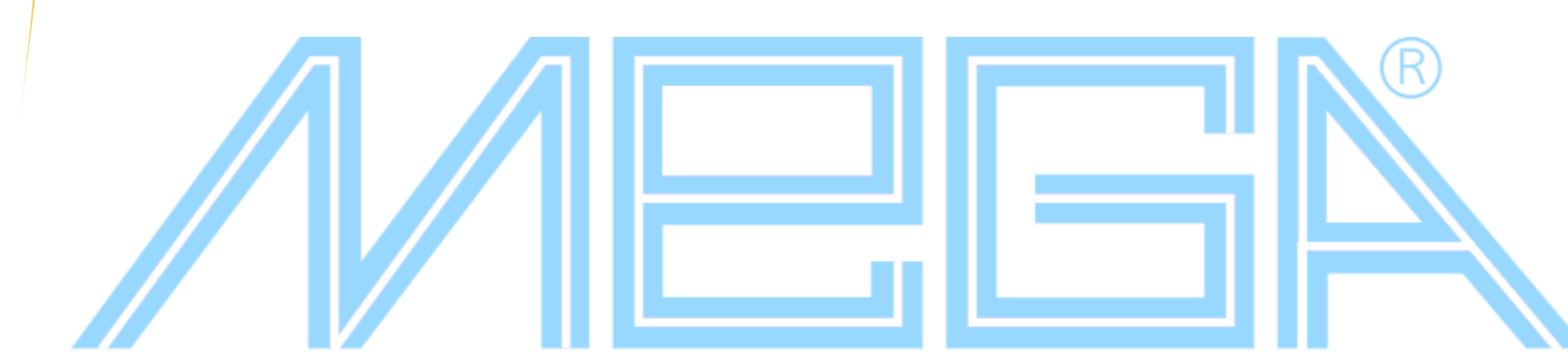
MEGA[®]
gas chromatography solutions

2000



MEGA[®]

1980



MEGA[®]

www.mega.mi.it

MEGA S.r.l. - Via Plinio, 29 - 20025 Legnano (MI) - Italy
Tel./Fax: +39 0331.54.79.24 - info@mega.mi.it